



# Carbon and co-benefits Decision Support Tool Webinar

# Decision Support Tool Walk-through

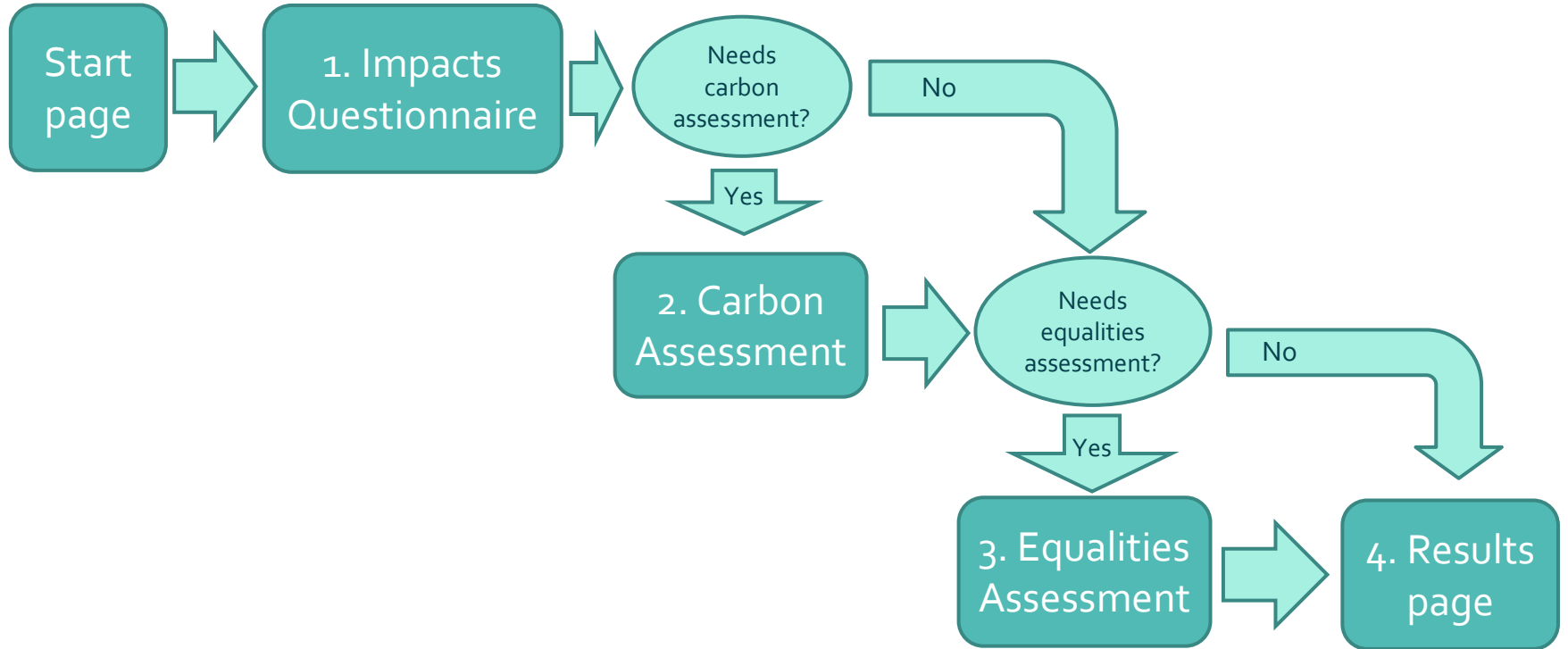
Tyndall°Centre  
for Climate Change Research



Centre for Climate Change  
and Social Transformations

**GMCA** GREATER  
MANCHESTER  
COMBINED  
AUTHORITY

# Tool flowchart



# Start page of the Tool

## Introduction

This Decision Support Tool allows users to self-assess the impact of the proposed policies, initiatives, or services against your local authority's policy frameworks. It provides decision makers with a high-level assessment of how a Decision meets policy goals and can facilitate a process of revising Decisions to more fully meet these goals. Where more detailed assessment is needed, users should consult other tools that lead to a full assessment of specific impact areas as indicated (e.g. Environmental Impact Assessment, Cost Benefit Analysis). Users self-assess against nine impact areas (Equalities, Health, Resilience & Adaptation, Housing, Economy, Mobility & Connectivity, Carbon, Nature & Environment, Consumption and Production and your local authority's climate change target). Depending on your answers, you may then be directed into a self-reported Carbon Assessment tab, where your paper will be compared to relevant best practice. If your paper impacts on people with 'protected characteristics', you will be directed to the Equalities Impact Assessment tab.

Note that the Carbon Assessment does not yet assess embodied carbon and the tool does not go into the detail of intersectionality with regard to equality and inclusion impacts. As such, it is important that users take an 'overview approach' when using this tool to inform decision-making at your local authority.

## Contents of this tool

This tool comprises the following sections. Instructions for each section are detailed on the relevant pages.

[Step 1: Impacts Questionnaire](#) ← *Get started by clicking on this link.*

[Step 2: Simple Carbon Assessment](#)

[Step 3: Equalities Impact Assessment \(if applicable\)](#)

[Step 4: Results](#)

## Overview information

*Please complete all fields*

Name of policy / initiative / service to be assessed	
Author(s)	
Date of Assessment	
Document Version	
Corporate objective being addressed	
Department / function carrying out the assessment	
Who is responsible for the implementation of the policy / initiative / service? (function head / department manager)	
Brief description of the proposal or decision	
Value (£)	
Is this a strategy document?	<input type="text"/>
If this is a strategy document will this strategy have an impact over multiple years?	<input type="text"/>
Which area (e.g., name(s) of town or ward) does this policy / initiative / service apply to?	

# 1. Impacts Questionnaire

- The Impacts Questionnaire is divided into 9 Impact Areas:
  - 1. Equality and Inclusion
  - 2. Health
  - 3. Resilience and Adaptation
  - 4. Housing
  - 5. Economy
  - 6. Mobility and Connectivity
  - 7. Carbon, Nature and Environment
  - 8. Consumption and Production
  - 9. Climate Change Target
- each Impact Area has questions about different aspects of your proposed project or policy
- you answer these from a drop-down menu + text box for comments and explanation
- the Tool produces a RAG rating for each impact area + your comments

# 1. Impacts Questionnaire

## Drop down menu responses – available for each question

**Yes, with long lasting and/or significant positive impact.** The proposal or decision has positive impacts that are long lasting (3 or more years) and/or are significant for large numbers of residents and/or a significant proportion of a particular group or community.

**Yes, with short term (3 years or less) or limited positive impact.** The proposal or decision has positive impact, but will be limited in its effects or have a short lifespan.

**No, the decision or proposal has no discernable positive or negative impact.** It will not affect any discernible positive or negative change.

**Yes, but with short term (3 years or less) or limited negative impact.** The proposal or decision has negative short term or limited impacts.

**Yes, but with long lasting (more than 3 years) or severe negative impact.** The proposal or decision has negative impacts that are long lasting (3 or more years) and/or are significant for large numbers of residents and/or a significant proportion of a particular group or community.

## How the Tool rates each impact area – based on your answers

**All green.** The proposal or decision is expected to have **positive impacts overall**, whether long or short term.

**Equal number of red and green OR at least one red.** The proposal or decision has both positive and negative impacts OR have net neutral impact with equal positive and negative overall outcomes. Careful consideration of trade-offs is recommended.

**Mostly red, with at least one green.** Careful consideration of trade-offs is necessary.

**All red.** The proposal or decision is expected result to **negative impacts overall**. It should receive most attention for mitigation or be avoided. Clear and evidenced justification to progress this proposal will be required.

# 1. Impacts Questionnaire – impact areas

Headline question – is this Impact Area relevant?

2. Health

Will this proposal or decision affect people's physical or mental well-being?

Yes  
 No

Drop-down menu response

Overall RAG rating for this Impact Area

Text comment to explain your answer

Specific question

Please complete next part →

1	Will this proposal or decision affect the physical health of residents?		<input type="text"/>
2	Will this proposal or decision affect the mental well-being of residents?		<input type="text"/>
3	Will the proposal or decision affect residents' levels of physical activity?		<input type="text"/>
4	Will the proposal or decision affect levels of social isolation?		<input type="text"/>
5	Will this proposal or decision affect resident access to healthcare services (physical and mental) through the provision or removal of infrastructure (transport links, digital infrastructure, hospitals, surgeries etc)?		<input type="text"/>
6	Will this proposal affect the lifestyle and/or health of residents through access to and provision of healthy food?		<input type="text"/>

RAG Result

comment - please provide succinct statements.

This is calculated when all questions have been answered

# 1. Impacts Questionnaire – impact areas

## 4. Housing

Will this proposal or decision affect housing in your local authority?

Yes  
 No

Guidance notes in pop-up

Please complete next part →

1	Will this proposal or decision affect people who are experiencing or at risk of any form of <b>homelessness</b> including for example, <b>rough sleeping</b> ?	<a href="#">More help (web link)</a>	
2	Will this proposal or decision affect the accessibility or affordability of homes for residents?		
3	Will this proposal or decision improve derelict urban land or reuse redundant or underused buildings for local housing?		
4	Will this proposal or decision facilitate construction of <b>new-build</b> residential building(s)?	<a href="#">More help (web link)</a>	
5	Will this proposal or decision facilitate maintenance or improvement of existing residential building(s)?		
6	Will this proposal or decision affect mandates or regulations for landlords on building standards?		

Web link to more information

RAG Result

Comment - please provide succinct statements.

This is calculated when all questions have been answered


## 2. Simple Carbon Assessment

- Based on your responses to the Impacts Questionnaire, the Tool selects appropriate parts of the Carbon Assessment for you to complete
- The questions take a variety of formats:
  - ▣ Yes/no answers
  - ▣ Numerical answers
  - ▣ text box answers
- Your responses are scored against best practice for reducing carbon emissions



## 2. Simple Carbon Assessment

- Each section of the Carbon Assessment then gets a colour-coded rating – using a different system to the Impacts Questionnaire

Grey	Grey: No associated carbon impacts expected for decision.
Green	Green: In the simple assessment the decision meets the highest standard in terms of practice and awareness.
Blue	Blue: In the simple assessment the decision meets most of the associated best practice with a good level of awareness.
Brown	Brown: In the simple assessment the decision only partially meets associated best practice and/or awareness is lacking, significant room for improvement.
Black	Black: In the simple assessment the decision does not meet best practice and/or there is insufficient awareness of carbon impacts.

- Note that “insufficient awareness” – i.e. not having an answer – gets the lowest rating

# 3. Equalities Assessment

- Depending on your responses to the Impacts Questionnaire, you may be directed to complete the Equalities Assessment
- 3 sub-sections
  1. High level information about project
  2. Relevance for particular groups and issues
  3. Record of process – who you've engaged and consulted with, when
- Stand alone section – doesn't produce a RAG rating for the Results
- If you already have an Equalities impact process, you can just give link to that

- 
- **SWITCH SCREEN TO THE EXCEL TOOL –  
FILLING IN SOME SECTIONS 'LIVE'**

# 4. Results – real world example

This is a GMCA decision paper, concerning 'Delivering 30,000 Net Zero Carbon Social Rented Homes: Initial Implementation Plan

Delivering 30000 Net Zero Carbon Social Rented Homes Initial Implementation Plan.pdf - Adobe Acrobat Reader DC (32-bit)

File Edit View Sign Window Help

Home Tools Delivering 30000 N... x

Sign In

46.7%

**GMCA** GREATER MANCHESTER COMBINED AUTHORITY

**GREATER MANCHESTER COMBINED AUTHORITY**

Date: 25 March 2022  
Subject: Delivering 30,000 Net Zero Carbon Social Rented Homes: Initial Implementation Plan  
Report of: Paul Dennett, Portfolio Lead for Housing, Homelessness and Infrastructure and Steve Rumble, Portfolio Lead Chief Executive for Housing, Homelessness and Infrastructure

**Purpose of Report**

To seek approval for an initial implementation plan for the delivery of 30,000 net zero carbon social rented homes by 2038, and for a further period of engagement and co-production with partners and stakeholders, including registered housing providers and local authorities as the primary developers of social housing in GM, on a more detailed partnership implementation plan, embodying the 'whole system challenge' approach agreed by GMCA in December 2021.

**Recommendations:**

The GMCA is requested to:

1. Endorse the attached initial implementation plan.
2. Commission work with partners to co-produce a more detailed partnership implementation plan for approval at a future meeting.
3. Agree engagement with Government as a key element of the partnership required to achieve substantial and sustained progress.

Contact Officers  
Andrew McIntosh, GMCA Director of Place [andrew.mcintosh@greatermanchester.gov.uk](mailto:andrew.mcintosh@greatermanchester.gov.uk)

1 2

Type here to search

21:17 17/09/2023





Centre for **Climate Change**  
and **Social Transformations**

[www.cast.ac.uk](http://www.cast.ac.uk)